



Great Titchfield Street, Fitzrovia, W1 £12,350 Per Month Furnished/unfurnished

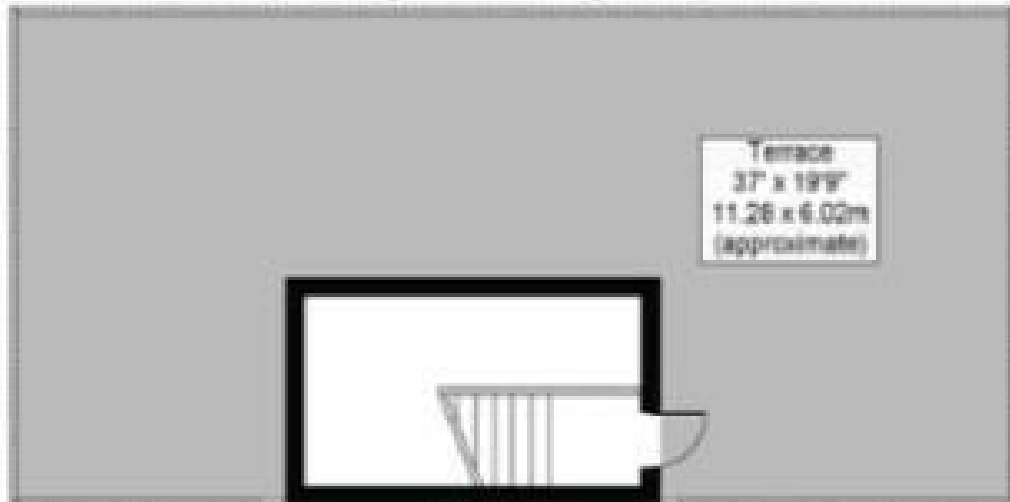
A beautifully presented luxury architect-designed first floor two bedroom apartment in the heart of Fitzrovia. Striking interiors in this stylishly converted former print and publishing house, combine authentic reflections of its past (reclaimed timber, Crittal windows and exposed brickwork) with luxury furnishings, fittings and textures. Underfloor heating, designer kitchens and bathrooms, Siemens appliances and modern cabling technology. Secure video entry system. Great Titchfield Street is seconds to Great Portland Street and a short walk to Charlotte Street, Oxford Circus and Regent's Park. Nearby underground stations are Oxford Circus tube station and Goodge Street tube station.



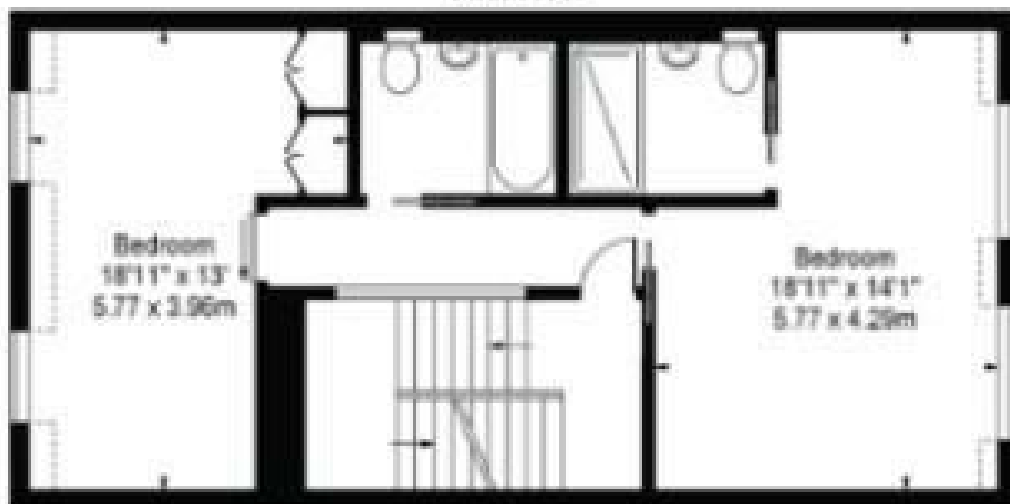
Print Works House

Approx. Total Internal Area 1616 Sq Ft - 150.13 Sq M
(Including Restricted Height Area)

Approx. Gross Internal Area 1599 Sq Ft - 148.55 Sq M
(Excluding Restricted Height Area)



Fifth Floor



Fourth Floor



Third Floor

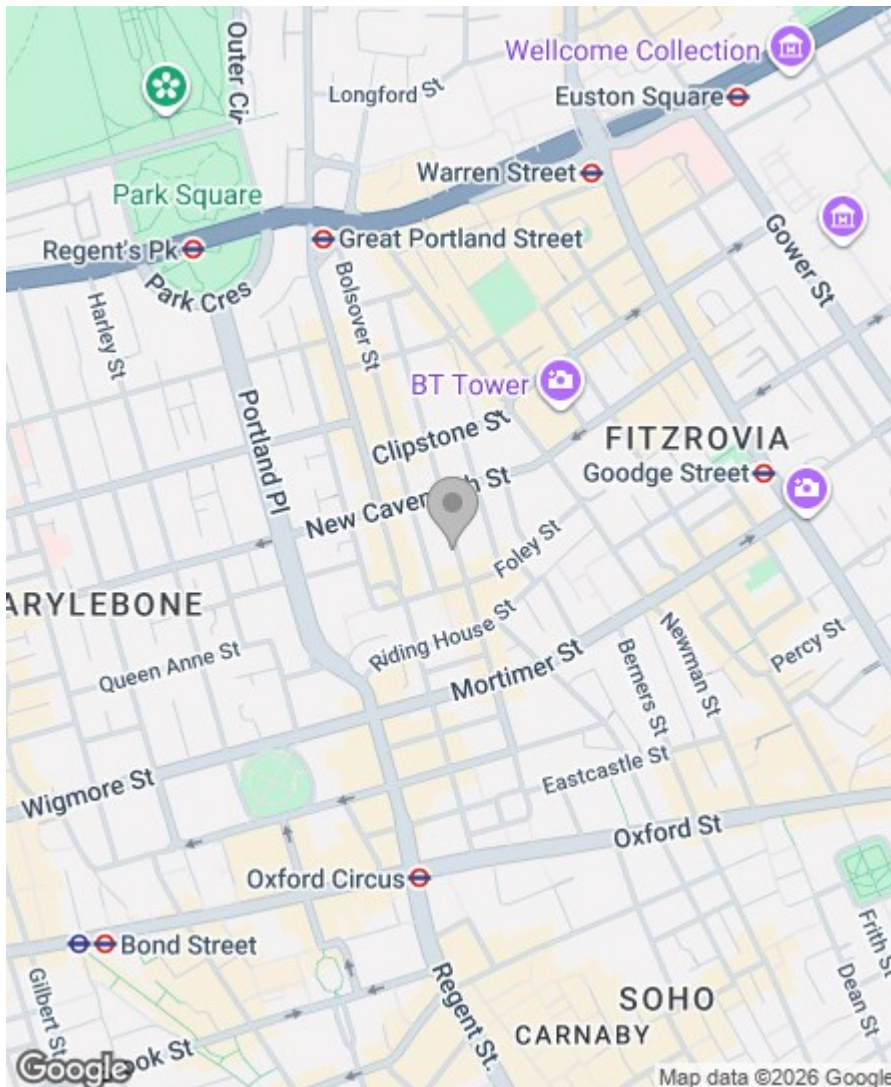
For Illustration Purposes Only - Not To Scale

Property Overview


Location	Fitzrovia, W1W
Price	£12,350 Per Month
Bedrooms	2
Bathrooms	2
Receptions	1
Council	Westminster
Tax Band	G
Furnishing	Furnished/unfurnished

Key Features

- Luxury Architect-Designed
- Crittal Windows
- Underfloor Heating
- Secure Video Entry System
- Available from 24th June 2026
- Furnished/Unfurnished



Energy Efficiency Rating

	Current	Potential
<i>Very energy efficient - lower running costs</i>		
(92 plus) A		
(81-91) B		
(69-80) C	76	76
(55-68) D		
(39-54) E		
(21-38) F		
(1-20) G		
<i>Not energy efficient - higher running costs</i>		
England & Wales	EU Directive 2002/91/EC 	

Greenstones Estates Ltd
Registered in England & Wales
Registered Office:
5 West Court, Enterprise Road,
Maidstone, Kent ME15 6JD

Company Registered number
03513585

Trading address
83 Boundary Road, St John's Wood,
London NW8 0RG

We are members of



IMPORTANT NOTICE: All of the information is intended only as a guide to a prospective purchaser and does not constitute any part of an offer or contract. Any measurements or distances referred to herein are approximate only. Any information contained herein (whether in the text, plans or photographs) is given in good faith and cannot be relied upon as being a statement or representation of fact. Should you proceed with the purchase of the property, your solicitor must verify these details. We have not carried out a detailed survey nor tested the services, appliances and specific fittings. In accordance with current legislation we would advise you that the measurements on these particulars are imperial. The formula for conversion to metric is as follows:- 1' (one foot) = 30.4cm (centimetres), 1m (one metre) = 3'29 (feet).

